



Lutton

NEB104/MT



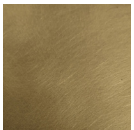
Battery

Material: Various Brass Finishes (Shown in Rich Bronze)

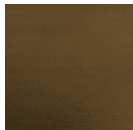
Shade: 6" Candle Shade (Brass)

Dimensions: 155 (W) × 279 (H) mm

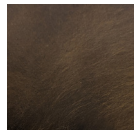
Finishes



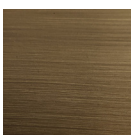
Light
Antique



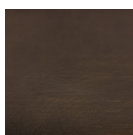
Old English
Light



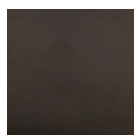
Old English
Dark



Georgian
Brass



Rich
Bronze



Oiled
Bronze



Lutton

NEB104/MT

- **Lamp Type:** Integrated LED
- **Lamp Base:** LED
- **Lamp Wattage:** 40W Equivalent
- **Modes:** × 2 brightness modes and flicker mode
- **Suitable for Outdoor Use:** Yes
- **Time to Charge:** 8 - 10 hours for 12 hours of output on full brightness and 26 hours of output on half-brightness
- **Operation:** Remote control*
- **Charging:** × 1 charging tray can charge × 3 lights. Trays are modular and can be linked together for volume charging*

**Remote control & charging trays are available to purchase separately.*