



# Bromell

NEB111



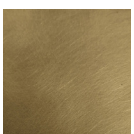
## Battery

**Material:** Brass / Glass / Granite \*  
**Colour:** Old English Patina / Black Granite  
**Shade:** Reeded & Frosted Glass  
**Dimensions:** 160 (W) × 262 (H) mm

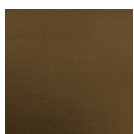
\* Available in White Marble detailing.

Suitable for indoor and outdoor use.

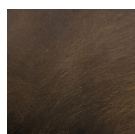
## Finishes



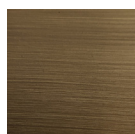
Light  
Antique



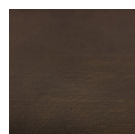
Old English  
Light



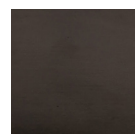
Old English  
Dark



Georgian  
Brass



Rich  
Bronze



Oiled  
Bronze



# Bromell

NEB111

- **Lamp Type:** Integrated LED
- **Lamp Base:** LED
- **Lamp Wattage:** 60W Equivalent
- **Modes:** × 2 brightness modes and flicker mode
- **Suitable for Outdoor Use:** Yes
- **Time to Charge:** 8 - 10 hours for 12 hours of output on full brightness and 26 hours of output on half-brightness
- **Operation:** Remote control \*
- **Charging:** × 1 charging tray can charge × 3 lights. Trays are modular and can be linked together for volume charging \*

*\*Remote control & charging trays are available to purchase separately.*